

# PRODUCT QUICK GUIDE

# PROCHEM

*Your Source for Local Supply and Support*

PIPING PRODUCTS



INSTRUMENTATION



VALVES



MANUFACTURING



INDENT & PROJECT SERVICES



HYDRAULIC



**PROCHEM**  
PIPELINE PRODUCTS

# The World of Prochem

## Piping Products

Prochem Pipeline Products stock an extensive range of stainless steel and alloy piping products including:

- **Fittings**
- **Flanges**
- **Pipe**
- **Tube** and
- **Valves.**



## Manufacturing

Prochem are able to provide off the shelf or made to order solutions for your quality fittings, assembly and service requirements. Produced from forgings, pipe or bar stock in stainless steel and special exotic alloys.



## Instrumentation

Prochem brings together leading manufacturers from around the world to offer a comprehensive range of quality mechanical instrumentation products.



## Indent & Project Services

Prochem has an international network of stockists and mills to back up their extensive Australian and New Zealand stocks. They are committed to exceeding your expectations with a highly efficient indent and project service facility.



## Valves

Prochem partners with the most innovative and quality driven manufacturers to offer specialist valve and actuator supply solutions for all of your applications.



## Hydraulic

Prochem Hydraulic connections range delivers a focused group of products to suit the Hydraulic industry and features world class innovative systems.



# Your Source for Local Supply and Support

## Welcome to The Prochem Advantage

Prochem Pipeline Products is a leading supplier of superior piping products, mechanical instrumentation and valving solutions.

For over 60 years we have consistently delivered quality management, expert technical support, and a total commitment to our valued customers.

Our knowledge and expertise allow Prochem representatives to take a hands-on, individualistic approach, providing value added solutions.

Coupled with a comprehensive product range through our six stocking branches across Australia, Prochem is your local source for supply and support.

We call this, **The Prochem Advantage.**



## Training

A safe operation requires; recognising hazards, using equipment "fit for purpose", understanding systems and procedures, having trained and competent staff, a thorough knowledge of emergency procedures and the ongoing monitoring of performance.

Prochem Installation Training improves the overall safety of your fluid system installations to ensure installation integrity and reliability.



## Quality Management

Quality is paramount in everything we do. From selecting raw materials and buying equipment, to employing the best people and testing products prior to release.

Prochem is certified to AS/NZS/ISO 9001 Quality Management System, under Lloyd's Register of Quality Assurance. Our products are manufactured and conform to selected Australian and International standards including:

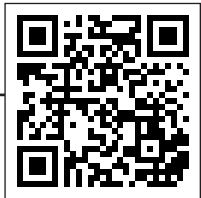
- Australian Standards: AS
- American Standards: ASTM
- British Standards: BS
- International Organisation for Standardisation: ISO



CERTIFIED QUALITY  
MANAGEMENT SYSTEM  
(Australia)



# PIPING PRODUCTS



**BSP FITTINGS**



**PIPE AND TUBE  
WELDED AND SEAMLESS**



**SOCKETWELD FITTINGS**



**FLANGES**



**NPT FITTINGS**



**PIPE AND SWAGE NIPPLES**



**BUTTWELD PIPE FITTINGS  
WELDED AND SEAMLESS**



**SAFLOK**



**HYGIENIC**



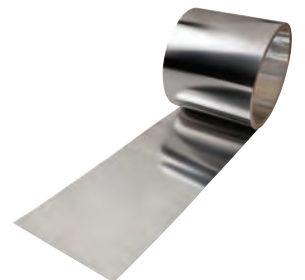
**OUTLETS**



**EUROPEAN STOCKED  
PIPE - FITTINGS - FLANGES**



**VICTAULIC**



**SHIM**



**HIGH PURITY TUBE & FITTINGS  
DOCKWEILER**



**WELDED TUBE**



**STRAUB**



**CuNi**

# INSTRUMENTATION



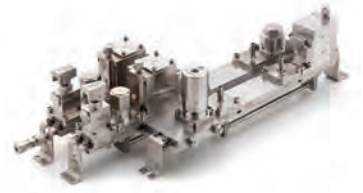
**GYROLOK®**



**HOKE® VALVES**



**GO REGULATOR®**



**CT76 SYSTEM**



**CIRCLE SEAL CONTROLS®**



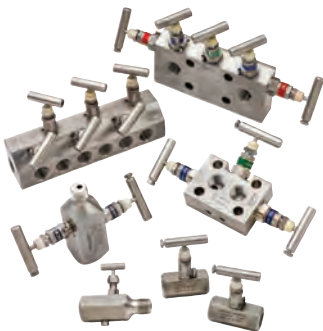
**HOKE® PIPE FITTINGS**



**6MO SEAMLESS TUBE & 316 SEAMLESS TUBE**



**DOPAK® SAMPLING SYSTEMS**



**ANDERSON GREENWOOD INSTRUMENTATION PRODUCTS**



**ANDERSON GREENWOOD PRIMARY ISOLATION**



**CLASSIC FILTERS**



**BUTECH**



**TOOLING**



**STAINLESS STEEL BRAIDED HOSES**



**ABB LEVEL MEASUREMENT**



**KING INSTRUMENT COMPANY**



**ATKOMATIC® SOLENOID VALVES**



**DEKORON**



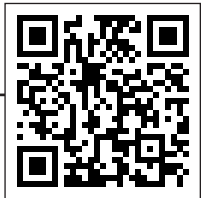
**FLUENTA**



**STAUFF**



# VALVES



**CUSTOMISED FAST-DELIVERY**



**ATC ACTUATORS**



**SINGER**



**A-T CONTROLS**



**KACE**



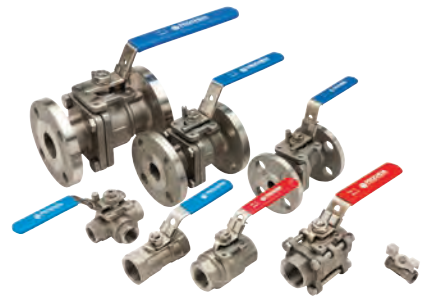
**ANDERSON GREENWOOD  
PRIMARY ISOLATION**



**CPV**



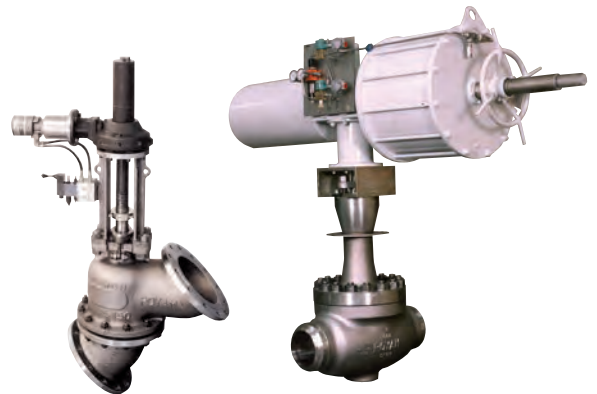
**WATER MANAGEMENT**



**STAINLESS STEEL BALL VALVES**

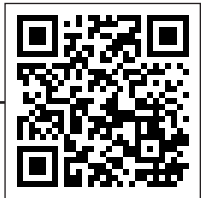


**BONNEY FORGE**



**AMPO POYAM**

# HYDRAULIC



TMI 37° FLARE & RETAIN RING



PYPLOK



CPV

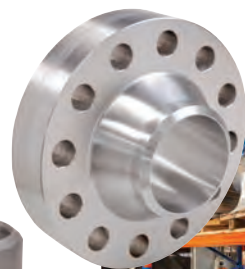
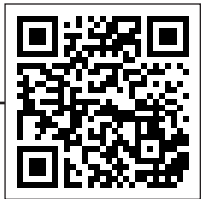


JIC FITTINGS

# MANUFACTURING



# INDENT & PROJECT SERVICES





**FOR FURTHER DETAILS PLEASE CONTACT YOUR LOCAL PROCHEM OFFICE**

**ADELAIDE & DARWIN**

3A CB Fisher Drive  
Cavan, South Australia  
Australia 5094  
**T 61-8-8241 7633**

E [sales@prochem.com.au](mailto:sales@prochem.com.au)

**BRISBANE**

1-5 Kingsbury Street  
Brendale, Queensland  
Australia 4500  
**T 61-7-3265 2711**

E [sales@prochem.com.au](mailto:sales@prochem.com.au)

**HOBART**

96-98 Central Avenue  
Derwent Park, Tasmania  
Australia 7009  
**T 61-3-6272 8828**

E [sales@prochem.com.au](mailto:sales@prochem.com.au)

**MELBOURNE**

5-15 Ventura Place  
Dandenong South, Victoria  
Australia 3175  
**T 61-3-9799 2244**

E [sales@prochem.com.au](mailto:sales@prochem.com.au)

**PERTH**

6 Forge Street  
Welshpool, Western Australia  
Australia 6106  
**T 61-8-9458 7777**

E [sales@prochem.com.au](mailto:sales@prochem.com.au)

**SYDNEY**

30 Enterprise Circuit  
Prestons, New South Wales,  
Australia 2170  
**T 61-2-9727 0044**

E [sales@prochem.com.au](mailto:sales@prochem.com.au)

**[www.prochem.com.au](http://www.prochem.com.au) | [1300 287 777](tel:1300287777) | [sales@prochem.com.au](mailto:sales@prochem.com.au)**